

**Notice Type:** Train Operating Conditions (TOC) Waiver

**Location:** Flemington Goods Yard to Enfield Yard and Chullora Disposal Sidings, NSW

**Subject Title:** Restricted movement of "K Set" Passenger Cars on the ARTC Network

**Operator(s):** Southern Shorthaul Railroad / 3801 Limited

**Corridor/line:** SSFL / MFN

**Effective From:** 01/04/2026

**Effective To:** 01/10/2026

**Reference Documents:**

**Route Access Standard:** RAS – General Information & TOC

**TOC Manual:** Section 10 – Rolling Stock Data

**General Details / Operating Condition:**

A Waiver to the conditions of the ARTC TOC Manual is issued for the restricted movement of Sydney Trains "K Set" passenger vehicles on the ARTC Network from Flemington Goods Yard to Enfield Yard, Sydney Trains Main South Line and Chullora Disposal Sidings.

**There is no return movement for K sets.**

**Movements are subject to pathing.**

**Vehicle details:**

The following vehicles are NOT registered for operation and are only permitted for the movement as detailed below as these are over allowable rolling stock outlines.

Vehicle Code	Description	Max Speed	Max Gross Tonnes	Length Metres	Draw Gear Capacity	Car Numbers
C	Motor	25	46.9	20.3	0.90	3501-3580
T	Trailer	25	41.2	20.3	0.90	4171-4246
D	Control Trailer	25	42.2	20.3	0.90	4096-4099

The movements are subject to the following operating conditions:

**General movement conditions:**

- Vehicles are to be locomotive hauled on the ARTC Network.
- No additional vehicles are to be added to the consist.
- Maximum number of 12 cars can be moved on any train.
- Pathing is based on infrastructure clearances, not track centre clearances.
- Air and hand brakes to be fully operational on all vehicles.
- Passenger carriage to be unattended during movement unless by maintenance staff observing vehicle condition.
- Vehicles shall be prepared for transfer including securing of pantographs.
- **Maximum speed of operation limited to 25km/h when operated head-end**
- **Maximum speed of propelled operations limited to 10km/h, and propelled operations must be piloted.**
- **Additional speed restrictions in details below.**
- **K-set movements are classified as Out of Gauge. As such, there must be no adjacent-line rail traffic movements passing any K-set movement on the ARTC Network. Prior to entering the ARTC Network, rail traffic crews must confirm with the ARTC Network Controller that all adjacent-line rail traffic movements are held and that no passing movements will occur for the duration of the K-set transit.**
- **Movements are subject to pathing.**

**Flemington Goods Yard to Enfield Yard**

- Movement as detailed (Refer to Figure 1 and Figure 2):
  - From Flemington Junction to Enfield Yard:
    - Enter the ARTC Network at 18.909km Up Main from Flemington Junction.
    - Travel Up Main through Chullora Junction to Enfield.
    - At points 333B Up Main diverge through cross over to Through Road 1.
  - From Enfield Yard to Flemington Junction:
    - From Through Road 1, cross over to Up Main at points 333A.
    - At points 339A Up Main diverge through cross over to Down Main.
    - Travel Down Main through Chullora Junction to Flemington Junction.
- Specific Speed restrictions to be applied over path:
  - At 18.223km Weeroona Road Bridge.
    - Movement to pass at 10km/h until clear of location.
  - At 17.552km caution around ground signal.
    - Movement to pass at 10km/h until clear of location.
  - At 16.835km caution around ground signal.
    - Movement to pass at 10km/h until clear of location.

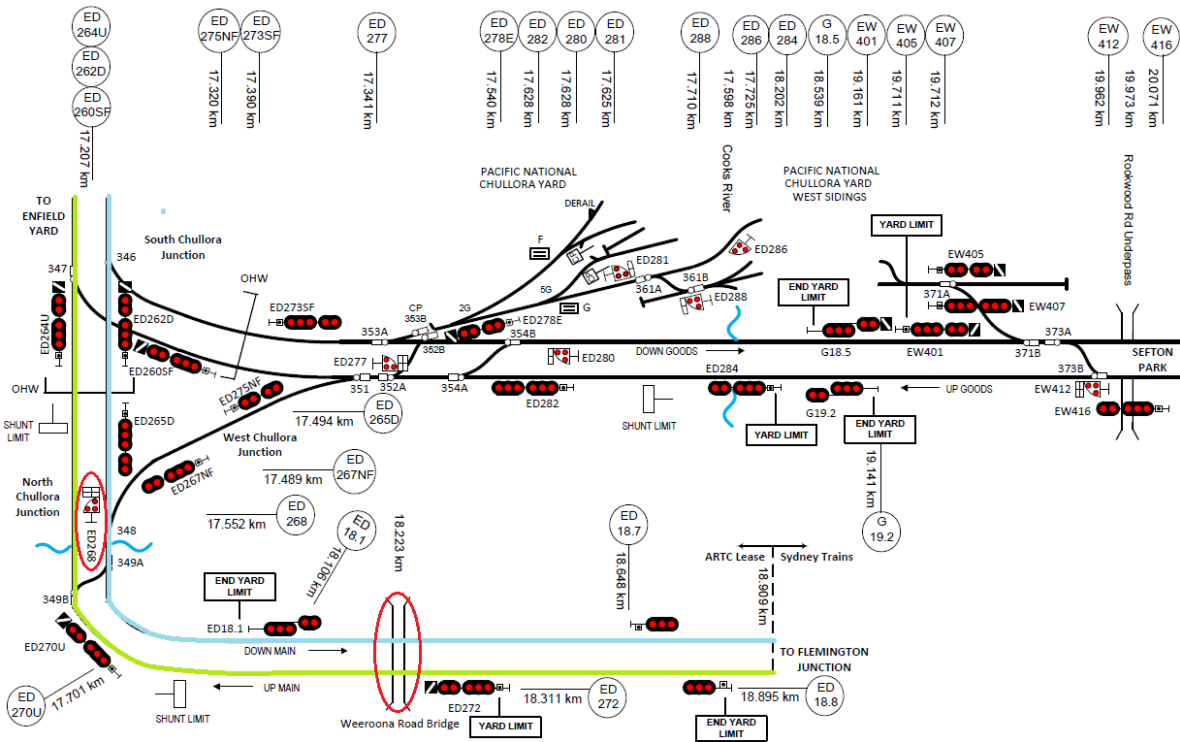


Figure 1: Route through Chullora Junction [Green towards Enfield Yard - Blue towards Flemington Junction.]

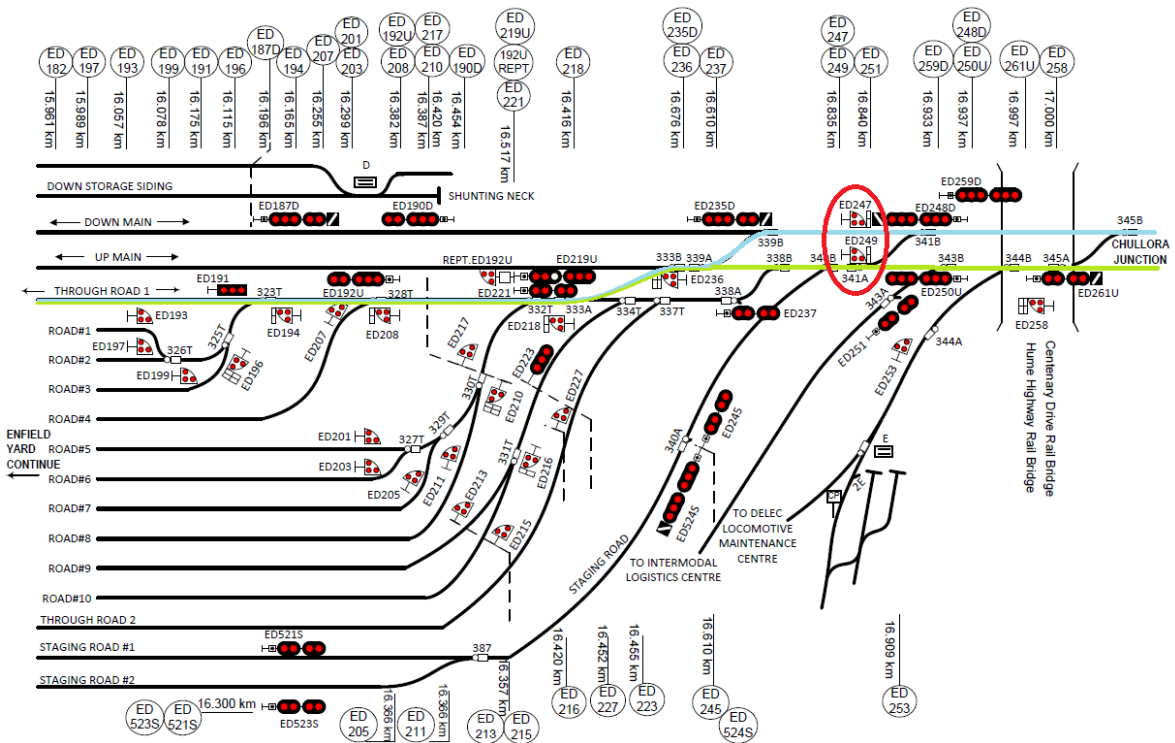


Figure 2: Route through Enfield [Green towards Enfield Yard - Blue towards Flemington Junction]

## Flemington Goods Yard to Chullora Disposal Sidings

- Movement as detailed (Refer to Figure 3):
  - From Flemington Junction to Chullora Disposal Sidings:
    - **Head End Movement**
    - Enter the ARTC Network at 18.909km Up Main from Flemington Junction.
    - Travel Up Main through Chullora Junction to Enfield.
    - At points 333B Up Main diverge through cross over to Through Road 1.
    - **Propelled Movement (Piloted at 10 km/h)**
    - From Through Road 1, diverge through cross over to Up Main at points 333A.
    - At points 339A Up Main diverge through cross over to Down Main.
    - Travel Down Main through South Chullora Junction towards Chullora Disposal Sidings.
    - At points 353A Down Goods diverge through cross over to Chullora Disposal Sidings.
- Specific Speed restrictions:
  - At 18.223km Weeroona Road Bridge.
    - Movement to pass at 10km/hr until clear of location.
  - At 17.597km caution around ground signal.
    - Movement to pass at 10km/hr until clear of location.
  - At 16.835km caution around ground signal.
    - Movement to pass at 10km/hr until clear of location.
  - At 17.465km caution around ground signal.
    - Movement to pass at 10km/hr until clear of location.

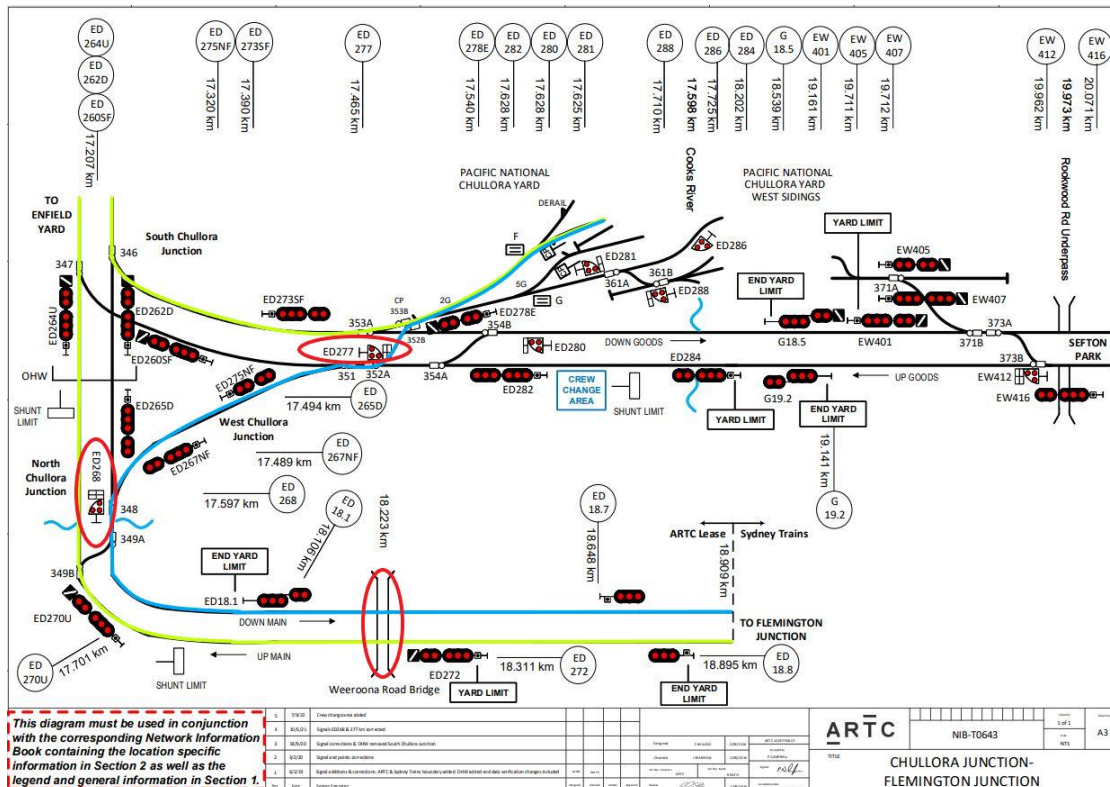


Figure 3: Route through Chullora Junction [Green towards Sidings - Blue towards Flemington Junction.]

**Approval:**

Approved by: Carolyn Southern

Date: 31/03/2026