

Notice Type:	SAFE Notice		
Location:	Junee		
Subject Title:	Permanent Removal of Road 21		
Corridor/Line:	Main South		
Control Board:	Main South B		
Kilometrage:	486.008	To:	486.223
Effective From:	11/08/2025	Time:	0700 hrs
Effective To:	12/08/2025	Time:	1800 hrs

Reference Documents:

Network Information Book: OGW-30-29

General Details / Operating Condition:

From 0700 hours on Monday the 11th August 2025 until 1800 hours on Tuesday the 12th August 2025 or until the work is completed, Inland Rail as part of the Albury to Parkes Enhancement Project, will undertake the removal of 21 Road and relocate the existing Stop Block.

The following infrastructure will be permanently removed:

Equipment	Kilometres	Details / Remarks
21 Road	486.010 to 486.223	Existing Stop Block to be relocated to 486.009km

Note: 21 Road is currently booked out of use on IBA No.38.

Safeworking Details:

All work must be carried out as per the appropriate ARTC Network Rules and Procedures.

As required an infrastructure Booking Advice (ANRF 003) must be compiled as per ARTC NSW Rules & Procedures ANWT 312 Infrastructure Booking Advice ANPR 704 Using Infrastructure Booking Advice.

Additional Details:

This SAFE Notice will serve as an amendment to the Network Information Book.

Amendment to Network Information Book:

OGW-30-29 – Harden (inc) to Albury (exc) & Cootamundra West (inc) to Stockinbingal (inc)

Section 2.12 Junee (JUN)

General Description

DELETE: 21 Road

Diagrams

AMEND: Junee NIB-T0344

Junee NIB-T0345

Line Diagram

A copy of the updated Drivers Diagram for Junee is provided as an attachment to this SAFE notice.

Recipients must ensure this Notice is circulated to and understood by all personnel affected by, or needing to know, its content.

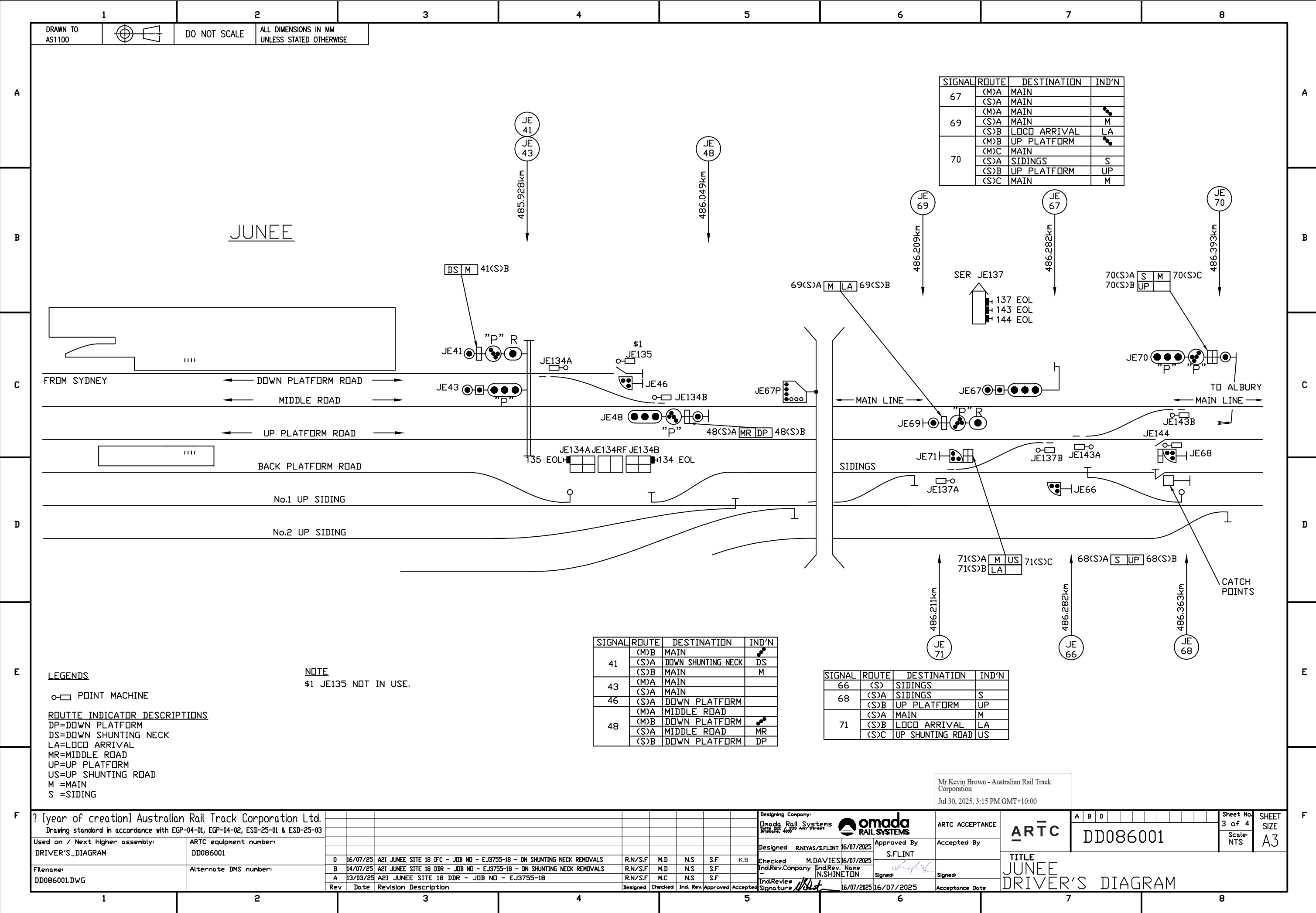
This Notice must be issued to all affected Competent Workers.
Competent Workers who receive this Notice must follow the requirements.

Contact Details:

Contact: Contact No.

Approval:

Approved by: Date:



1

2

3

4

5

6

7

8

Doc No: DD086_EJ3755-18_0

28/07/2025

